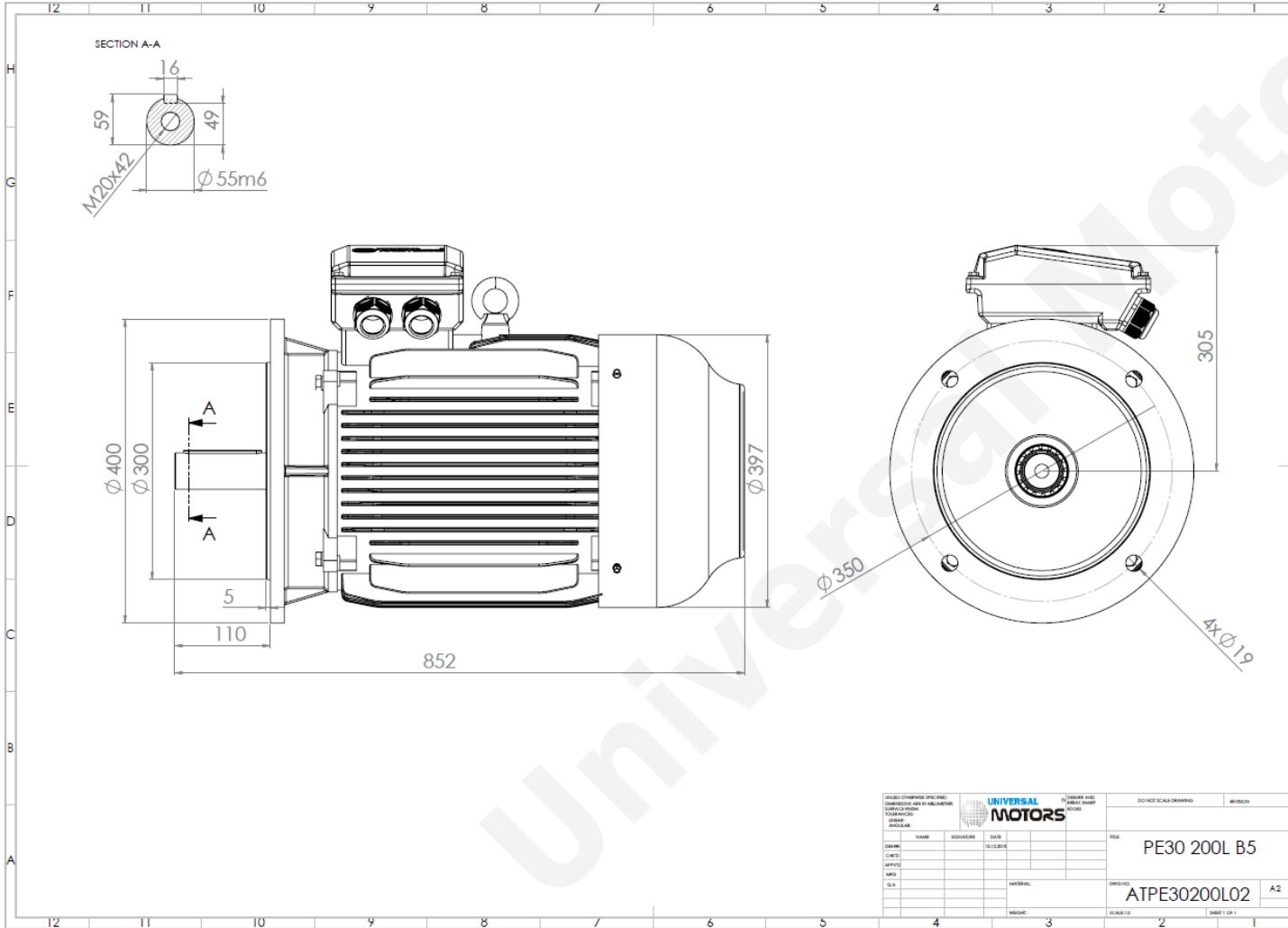




# TECHNICAL DATA

Three Phase Electric Motors - Cast Iron Frame  
 PE30 200 L1 2 IE3  
 30 kW / 40 Cv  
 2970 RPM



Motor type:	<b>PE30 200 L1 2 IE3</b>
Output:	<b>30 kW / 40 Cv</b>
Speed (min <sup>-1</sup> ):	<b>2970 RPM</b>
Frequency:	<b>50 Hz</b>
Voltage:	<b>400 V</b>
Current:	<b>52.1 A</b>
Power factor (Cos Ø):	<b>0.89</b>
Poles:	<b>2</b>
Insulation class:	<b>F</b>
Temperature rise Class:	<b>B</b>
Efficiency 50%:	<b>92.2 %</b>
Efficiency 75%:	<b>93.6 %</b>
Efficiency 100%:	<b>93.4 %</b>
Torque:	<b>96 N.m</b>
Tstarting/Tnominal:	<b>2.0</b>
Istarting/Inominal:	<b>7.6</b>
Tmaximum/Tnominal:	<b>2.3</b>
Noise:	<b>84 Db(A)</b>
Weight:	<b>256 Kg</b>
Bearing DE:	<b>6312 C3</b>
Bearing NDE:	<b>6312 C3</b>

UNIVERSAL MOTORS		DO NOT SCALE DRAWING		REVISION
DESIGN	NAME	DESIGNER	DATE	REV
CHIEF				
APPROV				
DATE				
SCALE				
MATERIAL			ATPE30200L02	A2
REVISION			SCALE 1:1	SHEET 1 OF 1

**Regime - S1**

**Altitude - 1000m**

**Environment Temperature - 40°C**

**CONTACTS:**

UNIVERSAL MOTORS Tel: +351 252 299 080  
 Rua de São Brás,745 Fax: +351 252 299 089  
 4480-782 VILA DO CONDE Mail: [geral@universalmotors.pt](mailto:geral@universalmotors.pt)

\* References applied only in the UK